



Interior Lumber Manufacturers' Association

Association of Kootenay Boundary Local Governments

Annual Convention

April 22-24, 2022

Nelson, BC

Modernizing Forest Policy





Who We Are

A PART OF YOUR COMMUNITY

The ILMA represents twelve member mills, a community forest corporation, and dozens of associate member companies generating thousands of jobs, and more than \$110-million in paycheques in our communities.

- ASPEN PLANERS
- ATCO WOOD PRODUCTS
- BRISCO WOOD PRESERVERS
- GALLOWAY LUMBER CO.
- GOLD ISLAND FOREST PRODUCTS
- JH HUSCROFT
- KALESNIKOFF LUMBER CO.
- NORTH ENDERBY TIMBER
- REVELSTOKE COMMUNITY FOREST CORP.
- PORCUPINE WOOD PRODUCTS
- STELLA-JONES
- VAAGEN FIBRE CANADA
- WOODCO
- 70+ ASSOCIATE MEMBERS

We Are The Forest Industry In BC's Southern Interior

ILMA is the collective voice of independent and family-owned mills in communities across the southern interior of B.C. We understand our industries' issues and work together to provide the best wood products and resource management possible.

**Interior Lumber
Manufacturers'
Association**

“The provincial government’s plans to modernize the forest sector, summarized in what is known as the Intentions Paper, have created uncertainty for many members of the forest industry.

The recommendations of the Old Growth Strategic Review, the Forest and Range Practices Act improvement initiative, and the changes to the Forest Act brought in by Bill 28 are setting the stage for major shifts in the forest industry.

Much of the policy reform is focused on the industry’s major licensees yet the changes affect all tenure holders.”

Source: Recent article from BC CFA



Interior Lumber
Manufacturers'
Association

1. Provincial Forest Intentions Paper – Modernizing Forest Policy



- 1. Provincial Forest Intentions Paper –
Modernizing Forest Policy**
- 2. Recent Forest Policy Direction**



- 1. Provincial Forest Intentions Paper –
Modernizing Forest Policy**
- 2. Recent Forest Policy Direction**
- 3. Forest Range and Practices Amendments**
 - **Forest Landscape Plans**
 - **Forest Operations Map**



- 1. Provincial Forest Intentions Paper –
Modernizing Forest Policy**
- 2. Recent Forest Policy Direction**
- 3. Forest Range and Practices Amendments**
 - **Forest Landscape Plans**
 - **Forest Operations Map**
- 4. Old Growth - Update**



Modernizing **Forest Policy** in British Columbia

*Setting The Intention and Leading
the Forest Sector Transition*



Guiding Principles

WE WILL FULFILL OUR VISION for the future of the forest sector and our forests based on three principles we have heard repeatedly from partners, stakeholders and communities. We will also fulfill our commitment to collaborate and cooperate with Indigenous peoples by:

- 1. INCREASING FOREST SECTOR PARTICIPATION**
- 2. ENHANCING STEWARDSHIP AND SUSTAINABILITY**
- 3. STRENGTHENING THE SOCIAL CONTRACT**



Interior Lumber
Manufacturers'
Association

POLICY INTENTIONS

Increasing Forest Sector Participation

- 1. Creating future tenure opportunities*
- 2. Providing clarity on compensation*
- 3. Creating flexibility when forest licences need to be reduced*
- 4. Revising tenure disposition considerations*
- 5. Enhancing revenue oversight for log exports*
- 6. Evolving BC Timber Sales (BCTS) policy for maximum sales restrictions*

ENHANCING STEWARDSHIP AND SUSTAINABILITY

- 7. Committing to implementing further deferrals of old growth forests*
- 8. Continuing to improve the Forest and Range Practices Act*
- 9. Re-integrating prescribed and cultural fire into forest management*
- 10. Advancing apportionment*
- 11. Reviewing the cut control process*
- 12. Improving accountability in tenure management*
- 13. Increasing discretion in authorizing activities*
- 14. Supporting silviculture management and innovative investments*

STRENGTHENING THE SOCIAL CONTRACT

- 15. Modernizing tenure replaceability conditions*
- 16. Increasing fibre access for value-added domestic manufacturers*
- 17. Promoting the use of wood and mass timber*
- 18. Revising area-based tenure-specific pricing policy*
- 19. Strengthening compliance and enforcement*
- 20. Protecting good jobs*



POLICY INTENTIONS

Increasing Forest Sector Participation

1. *Creating future tenure opportunities*
2. *Providing clarity on compensation*
3. *Creating flexibility when forest licences need to be reduced*
4. *Revising tenure disposition considerations*
5. *Enhancing revenue oversight for log exports*
6. *Evolving BC Timber Sales (BCTS) policy for maximum sales restrictions*

ENHANCING STEWARDSHIP AND SUSTAINABILITY

7. *Committing to implementing further deferrals of old growth forests*
8. *Continuing to improve the Forest and Range Practices Act*
9. *Re-integrating prescribed and cultural fire into forest management*
10. *Advancing apportionment*
11. *Reviewing the cut control process*
12. *Improving accountability in tenure management*
13. *Increasing discretion in authorizing activities*
14. *Supporting silviculture management and innovative investments*

STRENGTHENING THE SOCIAL CONTRACT

15. *Modernizing tenure replaceability conditions*
16. *Increasing fibre access for value-added domestic manufacturers*
17. *Promoting the use of wood and mass timber*
18. *Revising area-based tenure-specific pricing policy*
19. *Strengthening compliance and enforcement*
20. *Protecting good jobs*



BC Value-Added Coalition

Represents the common interests of the specialty wood and value-added sector in BC and made up of members of:

- BC Wood Specialties Group
- Interior Lumber Manufacturers' Association
- Independent Wood Processors Association

Mandate - **Focus on improved fibre access for the specialty/value-added sector**

- Work with BCTS to deliver on Policy Intention 16 that develops a program for BC Timber Sales that focuses on the value-added sector – Category Value.
- Develop incentive options for the primary sector to make consistent supply of raw material to VA Sector Available – VA Allocation.



Recent Ministerial Orders and Legislation Changes in Forestry

12

1. The Province established the Blueberry River First Nations Designated Area No.1 and the Minister made the 2021 Blueberry River First Nations Designated Area No.1 Order.
 - The Minister's order suspends cutting permits, road permits, road use permits , special use permits, timber sale licences and licences to cut that relate to all or part of the Designated Area.



Interior Lumber
Manufacturers'
Association

Recent Ministerial Orders and Legislation Changes in Forestry

1. The Province established the Blueberry River First Nations Designated Area No.1 and the Minister made the 2021 Blueberry River First Nations Designated Area No.1 Order.
 - The Minister's order suspends cutting permits, road permits, road use permits , special use permits, timber sale licences and licences to cut that relate to all or part of the Designated Area.

2. Bill 21 – 2019 – First step to improve administration and transparency of FSP's
 - Requirement for a new Forest Operations Map (FOM) depicting the approximate geographic location of proposed cut locks and roads.
 - Replacement requirement for FSPs (5 years) and new prescribed circumstances to extend a plan.
 - New circumstances for mandatory amendments to a FSP and reduced time to submit an amendment.
 - New authority to require amendment for catastrophic timber damage.
 - Expanded definition of wildlife to align with other legislation.
 - Ensuring recreation sites and trails introduced since FRPA have protection from forest practices that may impact them.
 - New authority to identify ecological communities at risk and establish general measures for their protection.



3. Bill 23 – New Forest Planning Regime

- Over a government-estimated 8 to 10-year period the current licensee prepared Forest Stewardship Plans, site plans and operations maps will be replaced with:
 - i. Forest Landscape Plans (FLP) prepared by government and jointly with Indigenous governing bodies and Forest Operations Plans (FOP) including Forest Operations Map (FOM), annual forest development schedules and site level plans prepared by licensees (and BC Timber Sales Managers)
 - ii. The FLP will be prepared by the chief forester with Indigenous governing bodies, who may have joint decision-making authority regarding the plans; and
 - iii. The FLP will apply to identified forest landscape areas, indicate where cut blocks and roads must not be located and may include “guidelines” regarding forest practices, silviculture systems and stocking standards that should be included in forest operations plans prepared by licensees.
 - iv. Forest operations plans and the forest operations map will show proposed cut blocks and proposed road construction.
- Many new road related items
 - New RP conditions - The minister may specify cancellation date, deactivation date, or exempt deactivation for public safety, other users etc.
- New Inventory Requirement for tenure holders - Must keep up to date and supplied to government with specified format.



Recent Ministerial Orders and Legislation Changes in Forestry

15

4. **Bill 28 – Timber Harvesting Rights for reallocation to others and compensation for these takings.**
 - **Bill Creates New Power to Take Timber Harvesting Rights from licensees for Reallocation to FNs, BCTS and Communities.**
 - **Bill Now Specifies Minister Determines Compensation. No negotiation or arbitration**
 - **Bill Creates new Approach to Determining Compensation – Based on net income (timber value less cost to harvest)**



Interior Lumber
Manufacturers'
Association

Recent Ministerial Orders and Legislation Changes in Forestry

16

4. **Bill 28 – Timber Harvesting Rights for reallocation to others and compensation for these takings.**
 - **Bill Creates New Power to Take Timber Harvesting Rights for Reallocation to FNs, BCTS and Communities.**
 - **Bill Now Specifies Minister Determines Compensation. No negotiation or arbitration**
 - **Bill Creates new Approach to Determining Compensation – Based on net income (timber value less cost to harvest)**

5. **OG Deferral Areas – November 2021**



**Interior Lumber
Manufacturers'
Association**

Background – OGSR Recommendations

MAY 2021 - ONGOING

IMMEDIATE MEASURES

1. Commitment to partnership with Indigenous Nations
5. Better public data
6. Deferral of old growth at risk of irreversible loss
7. Compliance with current standards

SUMMER/FALL 2021 - ONGOING

ELEMENTS REQUIRED TO SUPPORT CHANGE

2. Prioritize ecosystem health
4. More inclusive governance
9. Framework for setting and managing targets
13. Transition plans: local and provincial
14. Transition support for communities

2023 - ONGOING

A NEW OLD GROWTH STRATEGY

3. Three zone management
8. Funds for monitoring and evaluation
10. Updated biodiversity targets and guidance
11. Better inventory and classification
12. More innovative practices



Deferral Recommendations

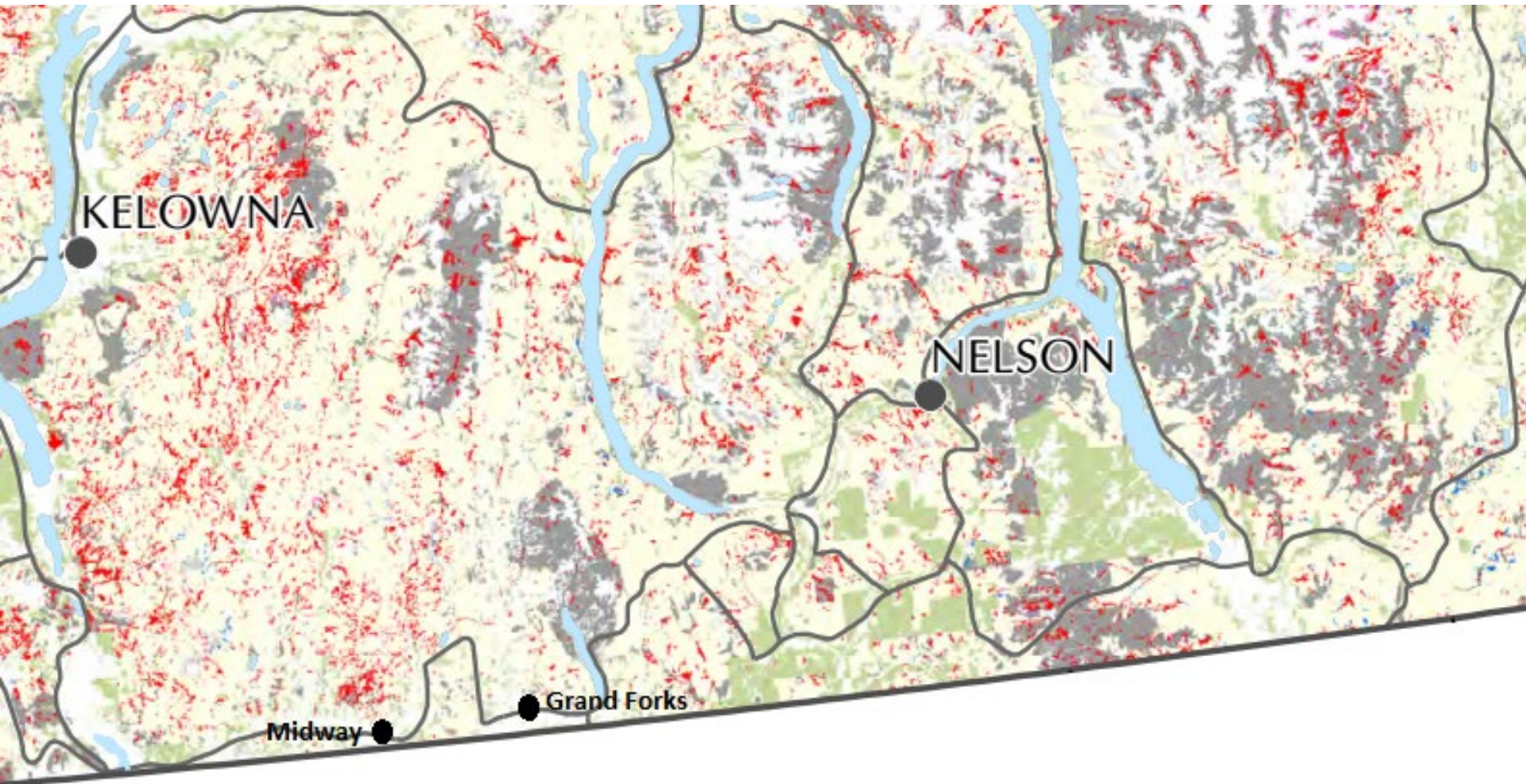
	Total Area (million ha)	Protected (million ha)	Unprotected (million ha)	Recommended for Deferral (million ha)
Big Tree Old Growth	6.2	2.1	4.1	1.7
Ancient Old Growth	0.6	0.2	0.4	0.4
Rare Old Growth	0.8	0.3	0.5	0.5
Total	7.6	2.6	5.0	2.6

- The province has **11.4 million hectares** of old forests located on Crown forested land.
- **75% of old forests – 8.5 million hectares – are either protected in BC or outside the Timber Harvesting Landbase (THLB).**
- While all old forests contribute to biodiversity, there has been much public discussion about the amount of old forests growing on sites capable of producing big trees – with some reports falsely suggesting this amount to be 3%. In reality, the study found **over 3.3 million ha of old forests, or about 30%, are growing on high productivity sites capable of producing big trees.**
- Relying on simple statistics from BC’s inventory data to identify ecosystems at risk is not recommended as local context and data limitations are not addressed. **Detailed assessments of old growth conditions must be completed regionally** in conjunction with local experts, including First Nations and forest professionals, to ensure sufficient context is available to support discussions and management decisions.



- **A Balanced Approach in Forest Management**
- **Robust and published socio-economic analysis** has not been shared
- **Clarity on deferral process** – Operational direction on road construction, forest management priorities, etc. were not clear and consistent.
- **How the Province will achieve their intention of value focus over volume focus** – To support/promote Value-Added, Independent Forestry Companies.





- **2.6 million ha. identified for deferral**
- **Over 70,000ha of approved CP's affected**
- **Government has requested a “temporary pause” on harvest and development planning across the entire 2.6 million ha.**
 - **Although these are not legal protected areas at this time, there is uncertainty on how to proceed on this large area.**
- **No transition plan presented for existing approved permits.**
- **No timeline on when FN consultation/rejection or approval will conclude.**
- **Licenseses are expected to evaluate risk in continuing operations or shutting down.**



- **Existing Approved Cutting Permits**
 - Range from 5% to 89% and the average is about 40%
- **Currently being developed Cutting Permits**
 - Range from 15%-48%
- **Mature Timber Harvesting Land Base**
 - Range from 6% to 35% and the average is about 15-20%
- **ILMA members don't have a large inventory of permits to move to.**
- **Cutting Permits take years to develop and get approved**
- **BCTS has drastically reduced planned sales in deferral areas and are currently analyzing how and if they can be reconfigured.**
 - **ILMA members rely heavily on BCTS volume to sustain their facilities**





IF BRITISH
COLUMBIA'S OLD
GROWTH FOREST
WAS A RIBBON
100 METRES WIDE,
IT WOULD CIRCLE
THE EQUATOR 48
TIMES.





IF BRITISH
COLUMBIA'S OLD
GROWTH FOREST
WAS A RIBBON
100 METRES WIDE,
IT WOULD CIRCLE
THE EQUATOR 48
TIMES.

The B.C. coast has so much old growth forest that 1 soccer field (equivalent) could be harvested every hour for

500 YEARS

and we would never run out!



Resource Works



Interior Lumber
Manufacturers'
Association



IF BRITISH COLUMBIA'S OLD GROWTH FOREST WAS A RIBBON 100 METRES WIDE, IT WOULD CIRCLE THE EQUATOR 48 TIMES.

The B.C. coast has so much old growth forest that 1 soccer field (equivalent) could be harvested every hour for

500 YEARS

and we would never run out!



Every 20 seconds, a tree on Vancouver Island turns 250 years of age - which means it is officially old growth.



Interior Lumber Manufacturers' Association

Resource Works

Resource Works

The Future Operating Realities of the Forest Industry

- Tenure reallocation may drastically alter who operates where within the province.
- First Nations should and will play an ever-increasing role in managing our forest resources.
 - Traditional knowledge and cumulative effects on the land base
- Licensee operating plans will be more transparent for communities and the general public to understand and comment on.
- Forest Landscape plans will be co-developed by government and FN with licensees creating operational plans (cut blocks and roads) based on the FLP and make them publicly available.
- Future fibre availability will be smaller due to fires, beetle, OG deferrals, caribou habitat and other government priorities.



Questions?

ILMA Contact

Dan Battistella, President

dan.battistella@ilma.com



Interior Lumber
Manufacturers'
Association